

# CELEBRATE

THE CAMPAIGN FOR ST. MICHAEL'S

ISSUE ONE | 2017

**ONE.**  
TOGETHER.

## Reflecting on the past with warmth and affection



From its early beginnings in 1957 as a mission of St. Michael's Episcopal Church, the School grew from an enrollment of 63 students to an enrollment of 377 students and tuition of \$225 to today's tuition of \$11,790. Capital campaigns, launched as early as 1958 with Taylor Hall to the development of the Singleton Campus, reflect the generosity of many and ensure learning spaces that accommodate program and student needs. "Superior academic instruction" at St. Michael's continually evolved to meet students' ever-changing needs from the core curriculum to now include Spanish beginning in second grade, International Baccalaureate for all Middle School students, coding and digital citizenship. Strong leadership, prudent fiscal management and dedicated and committed teachers made St. Michael's the School it is today!

Time-honored traditions such as Magic Dragon Day, Grandparents' Day and the Lower School Christmas Pageant continue to embrace and embody the spirit of St. Michael's — welcoming and reconnecting alumni and bringing families together to celebrate and engage in fun and special activities and programs. Through service learning experiences, students develop empathy, build character and become stronger global citizens.

In 2004, a gift of land and a challenge gift by Mr. and Mrs. W. E. Singleton gave St. Michael's the opportunity to transform its vision for the future, establishing a new campus for the Middle School and now, the Lower School. Few times are we given the opportunity to dramatically improve an institution — an opportunity that will be long-lasting and impact so many. The 70 acre Singleton Campus positions St. Michael's to build on its traditions of excellence, strengthen relationships across grade levels and meet the evolving needs of 21st century learners.

**Celebrate a tradition of sharpening young minds in an environment that encourages and inspires intellectual curiosity, purpose and productivity and develops Christian values. Celebrate the many wonderful opportunities that will emerge as we operate as ONE again!**





# Looking to the future with enthusiasm and expectancy

Following extensive feasibility studies and in fulfillment of the 2013-2017 Strategic Plan, the Board of Directors of St. Michael's Episcopal School announced in June 2017 that moving the Lower School to the Singleton Campus best served the School's mission. The combining of locations is more than a move. It is about bringing our School together again to operate as ONE, embracing history and traditions, expanding relationships to foster leadership and teamwork and making it possible for teachers to collaborate across grade levels.

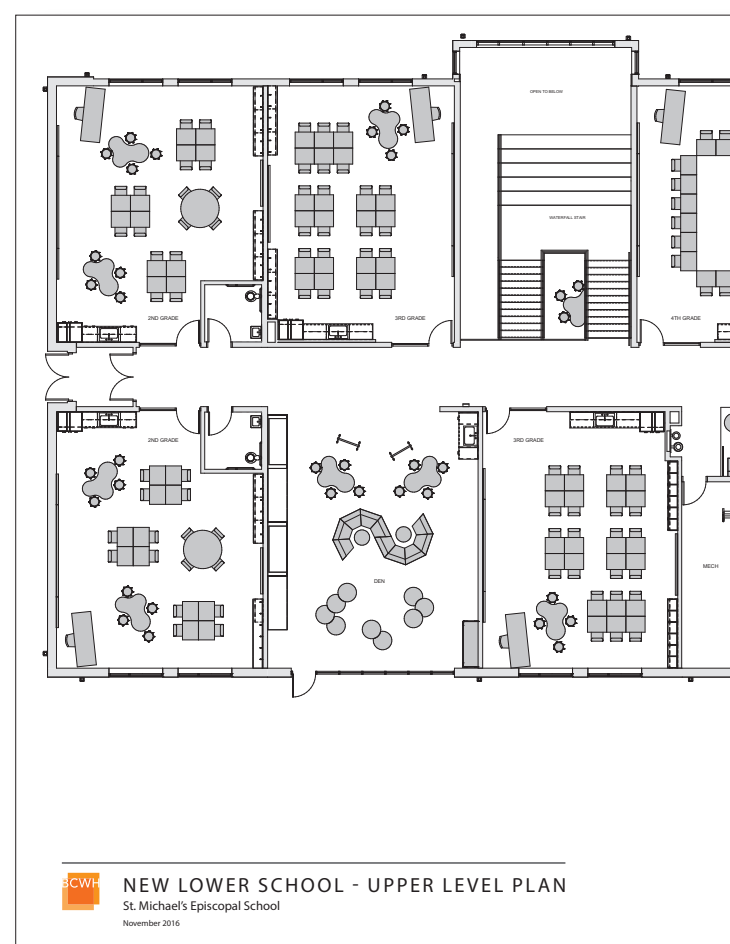


The \$12M project includes the Lower School academic building, an assembly building and outdoor education areas. The project is funded by drawing from the School's funds, financing and private philanthropy. BCWH Architects and the general contracting firm, Kjellstrom & Lee, spearhead the design and construction teams.

## LOWER SCHOOL

The academic building (25,010 sq. ft.) will have spaces for project work, learning discovery, reflective thinking and collaborative activities. The space encompassing the Atrium accommodates larger student groups participating in activities such as impromptu and planned performances or presentations, paired work and multi-class presentations.

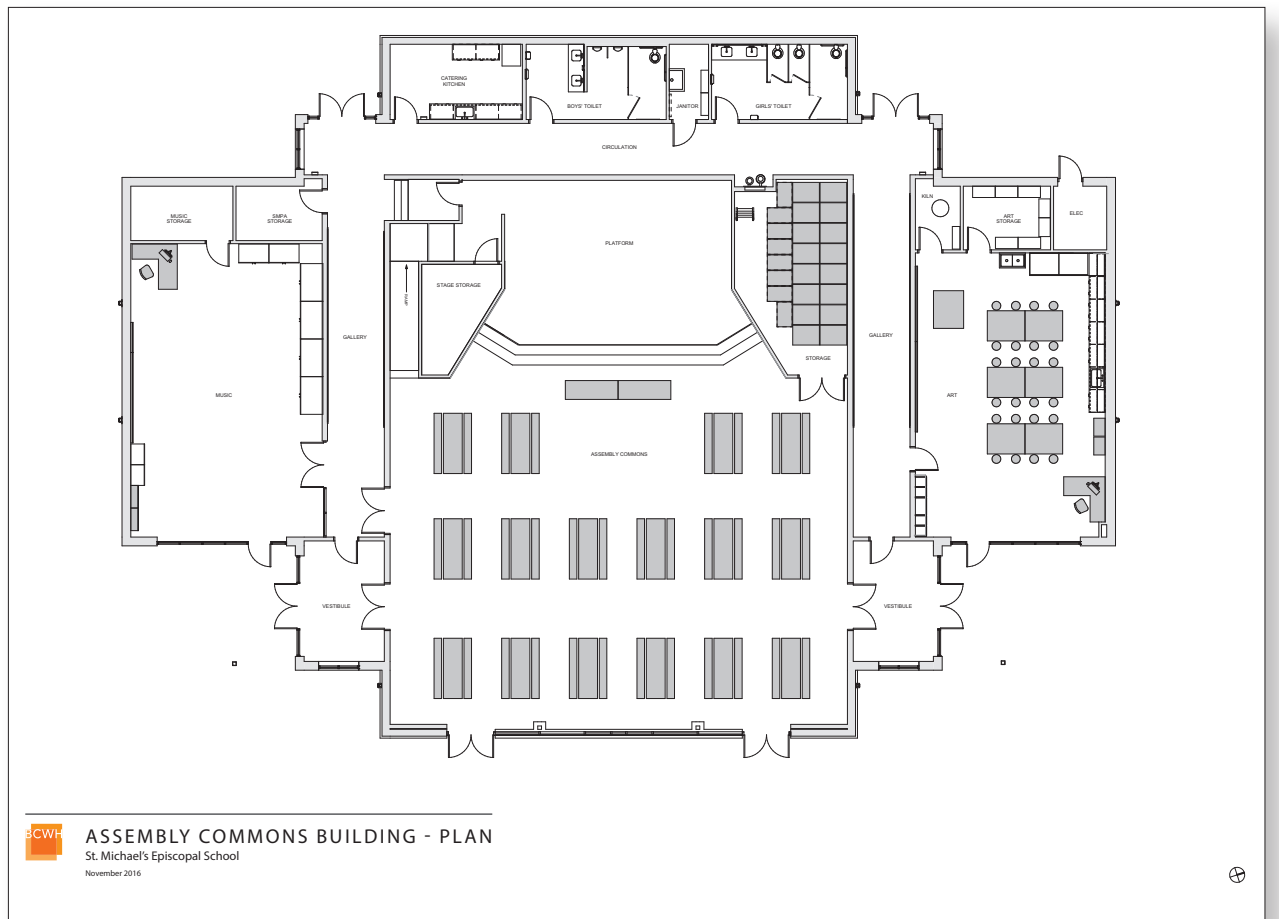
- The 12 classrooms (kindergarten-fifth grade) are on an average 30% larger than those on the Bon Air Campus and multi-functional with spaces for full class and individual instruction as well as group collaboration. The makerspaces and reading nooks in close proximity to the classrooms offer much needed space for STREAM (science, technology, reading, engineering, art and math) projects.
- The library joins the existing Allen Library to form a cohesive library system across all grade levels. Students will progress along a continuum of library spaces and resources (print and digital) from the Lower School to the Middle School as their skills allow and their needs require. The use of the library system will mirror students' progression from learning to read to reading to learn.
- Learning continues outdoors as students experience unique educational areas that celebrate and incorporate the natural environment and encourage teachers to develop new ways of engaging young minds. Learning Gardens provide immediate access to the wetlands and wooded areas, providing faculty with unending possibilities to develop and enrich activities.



## ASSEMBLY HALL

The integration of art and music into a single building adjoining the performing arts venue allows St. Michael's Fine Arts program to function more cohesively.

- The all-school Assembly Hall (10,960 sq. ft.) includes a large performance area for chapels and class plays as well as dining hall space for students.
- The music room is completely dedicated to St M students (not a shared space with the Church).
- An art classroom and a gallery space for exhibits.
- A patio for special events.



“The combining of locations is more than a move. It is about bringing our School together again to operate as ONE.”

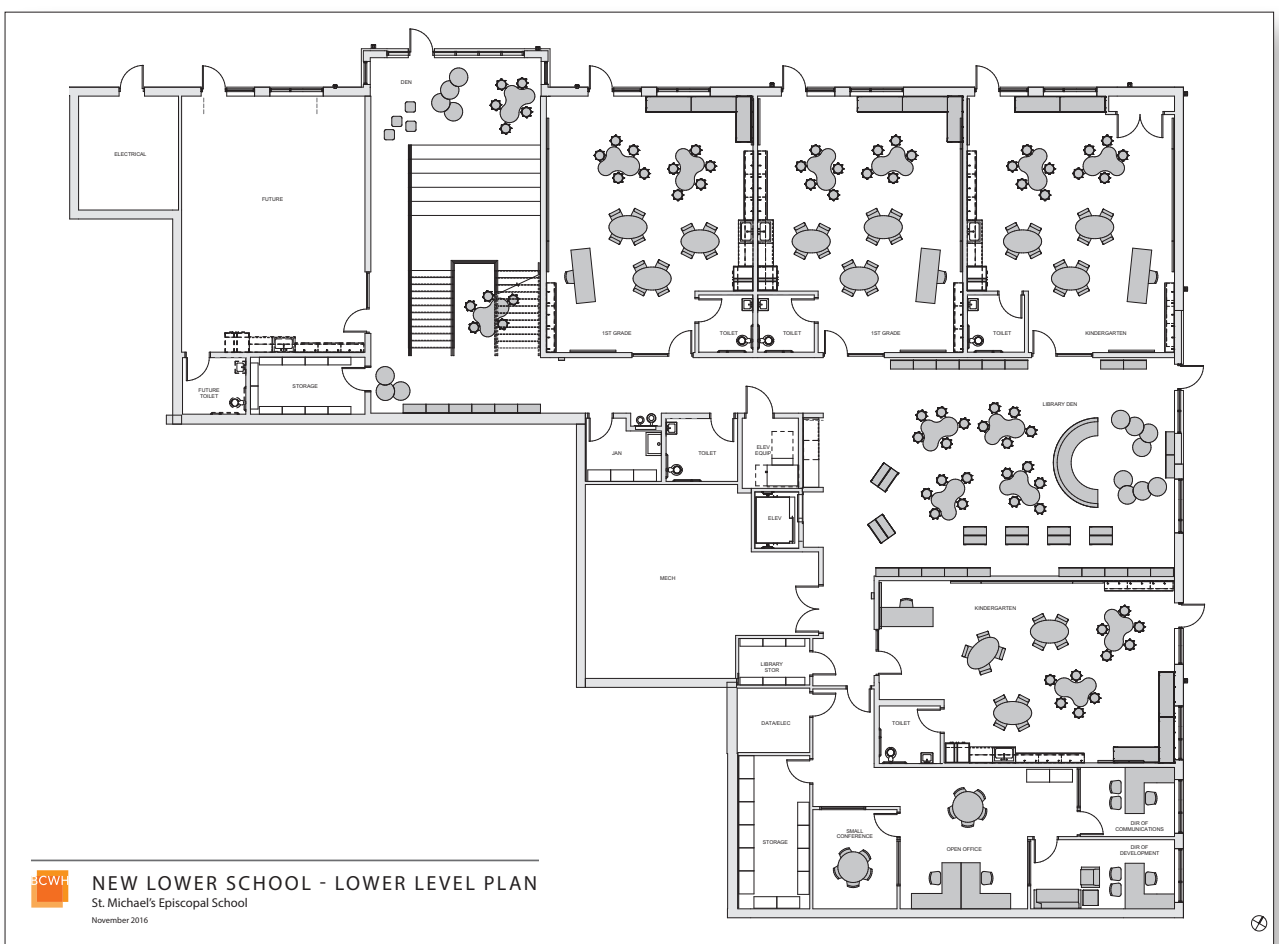
## CHALLENGE GIFT

As we celebrate St. Michael's Episcopal School's 60th anniversary, we also celebrate the Board's decision to operate again as a one campus school. Construction is well underway for the Edgar O. Hubbard Lower School (Hubbard Hall) on the Singleton Campus.

It is exciting to also announce the School recently received a two-to-one challenge grant of \$200,000 from The Mary Morton Parsons Foundation. Funds from the challenge grant support the ONE.TOGETHER. Campaign for the construction of the Edgar O. Hubbard Lower School and the Assembly Hall.

To receive the \$200,000, St. Michael's must raise \$400,000 from gifts and pledges received by May 1, 2018.

Your gift will help us meet the challenge grant and the philanthropic goals of the **ONE.TOGETHER.** Campaign.







THE CAMPAIGN FOR ST. MICHAEL'S

8706 Quaker Lane | Richmond, Virginia 23235

ONE. TOGETHER. Steering Committee

Honorary Campaign Co-chairs:

- Mr. Charles F. Witthoefft
Mr. Edward B. Witthoefft '92
Mr. D. Patrick Brown II '06
Mr. Scott Durham
Mrs. Caroline Jennings
Mr. Joshua A. Kayer
Mr. David C. Kearfott '90
Mr. Justin G. Knight '86
Mr. Nelson G. Knight '96
Mr. Tyler D. Meurlin
Mr. John A. Nolde
Mrs. Lisa Schuster
Mr. Nicholas G. Walker
Mr. Brian F. Witthoefft '95

NAMING OPPORTUNITIES

Table listing naming opportunities such as HUBBARD HALL (\$700,000), S.T.R.E.A.M. Amphitheater (\$500,000), and various classrooms and administrative offices with their respective costs.

WAYS TO GIVE

There are several ways to make a charitable gift to the ONE. TOGETHER. Campaign.

Gifts of Cash: Outright gifts of cash are often the easiest way to make a gift and have a direct impact on funding goals.

Gifts of Appreciated Securities\*: Gifts of appreciated securities offer additional tax savings.

Pledges: Gifts may be pledged over a specific period of time. The pledge period for the campaign is three years.

Corporate Matching Gifts: Many companies match their employees' gifts to qualifying institutions and organizations.

\*Please contact St. Michael's Development office for guidelines in making a gift by stock.

